



**“How something small,
can make such a big difference!!”**



“Your best choice in overdenture”

New York **KERATOR**

Overdenture Attachment Systems



www.KERATOR.com

Kerator has the world's most powerful competitiveness in overdenture attachment system.

Why?

KERATOR was chosen over the other overdenture attachment, for the comfortable retention power of caps and excellent mobility in the denture metal housing, in the world market.



E-mail : overdenture@kerator.com
Mobile : +82-10-8942-0373

KERATOR ATTACHMENT

For Implant

KERATOR Abutments are available for ALL IMPLANT SYSTEMS

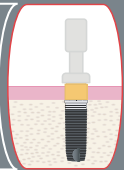


- Nobel Biocare
- 3i
- Astra
- Alpha-Bio
- ITI
- Ankylos
- Biohorizon
- Bego
- Bicon
- Camlog
- Frialit-2&Xive
- Lifecore
- Zimmer
- Uniti
- Pitt-Easy
- Tekka
- Neoss
- Thommen
- ICX
- Osstem
- Neo Biotech
- Dentium
- Dio
- Dentis
- Megagen
- Cowell Medi
- Warantec
- etc ...

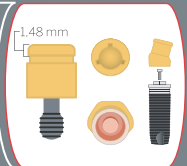
The others can be made within 10 days!!

ADVANTAGE

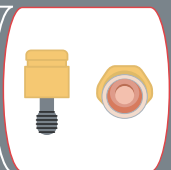
1. Included plastic carrier provides safer handling of the abutment. The carrier is also useful for checking the alignment angles of the implant fixtures.



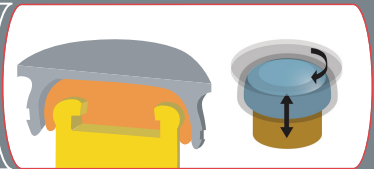
2. Kerator has the **LOWEST VERTICAL HEIGHT** of all overdenture attachment system available today.



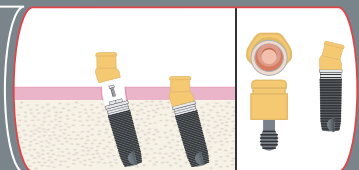
3. **DUAL RETENTION MALE** allows the denture cap to gently pivot in any natural direction during occlusal while providing greater resiliency and preventing it from dislodging.



4. **SELF-ALIGNING DESIGN** automatically centers the male on the housing attachment prior to engagement, allowing patients to easily seat their overdenture.





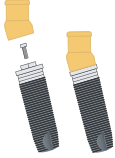


5. **EXTENDED RANGE MALE** allows for insertion of the overdenture with up to 40 degree of divergence between implants. 15 degree angled abutments can be used in combination to further extend the allowable divergence.



6. The **DUAL UNDERCUT DESIGN** of the Kerator metal housing attachment provides a sturdier retention within the denture acrylic.

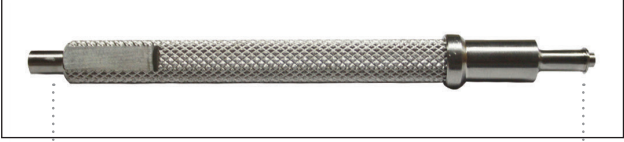


KERATOR VS A&B competitors

	Competitor A	Competitor B
<p>Using our own technology Patented KERATOR Angled Abutment in foreign countries, You can apply it to the wrong path of implants. It maximizes the satisfaction of patients and dentists.</p> 	<p>Patients can bite a denture into place without damages to attachment components. (self-aligning)</p>	<p>Patients must carefully insert their denture by hands only to avoid damage to B male. (not self-aligning)</p>
<p>Using KERATOR Carrier(or KERATOR Tip), you can thread KERATOR abutment into the implant easily and safely. Also you can check the alignment of angle with KERATOR Carrier, Using Magic Tool, you can tighten abutment and insert male cap into the metal housing.</p> 	<p>A patented combination of inside and outside retention ensures long lasting performance. (dual-retention)</p>	<p>The outside skirt of B has no retentive function. (only inside retention)</p>
<p>The shape of KERATOR Metal Housing is Dual-Undercut design. It increases coherence with denture resin.</p> 	<p>Durability cycle test A root : 110,000 insertions A implant : 60,000 insertions</p>	<p>Durability cycle test B root : 3,500 insertions B implant : 3,000 insertions</p>
<p>Retention power of KERATOR male cap is down up to 20% and red cap(angle) is included in the male package. 20 colors of cap determine retention power and it minimizes Denture Repair even if the change as bone loss is continued. KERATOR abutment for the implant of each company is threaded exactly, not compatible. KERATOR has many advantages and it's cost is lower than A's cost(about 40% off). One distributor in one country strategy. The lowest height in the world : 1.48mm</p>  <p>Zero "0" Retention →</p>	<p>Low height A root : 2.5mm (female 1.5mm+male denture cap 1.0mm) A on hexed implant : 3.17mm A is 2mm wider. A hinges but has no vertical resiliency.</p>	<p>High profile B root : 3.25mm (with metal cap) B on hexed implant : 4.85mm B is 2mm narrower. B hinges and offers true 0.4mm vertical resiliency.</p>

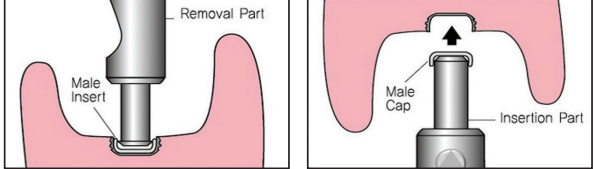
KERATOR Instruments & Components

MAGIC TOOL



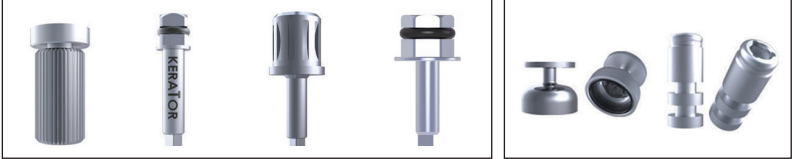
Insertion part Removal part

Replacing Male Inserts



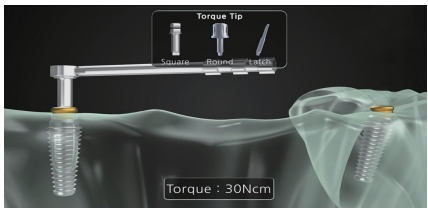
Removal Part, Male Insert, Male Cap, Insertion Part

TIP, HOUSING, COPING, ANALOG




Hand Housing, Torque Wrench Tip (Square Connector), Torque Wrench Tip (Round Connector), Torque Wrench Tip (6.3 Hex Connector), KERATOR Coping, KERATOR Analog

Tightening abutment by Torque Wrench



Torque Tip, Torque : 30Ncm

KERATOR Male Cap Set



Metal Housing, White Spacer, 2.4 lbs, 1.2 lbs, Extra Light Angled, 4lbs, Angled, Light Angled, Zero "0" Retention, Denture Spacer for Chair Side Work

KERATOR ATTACHMENTS

For Root

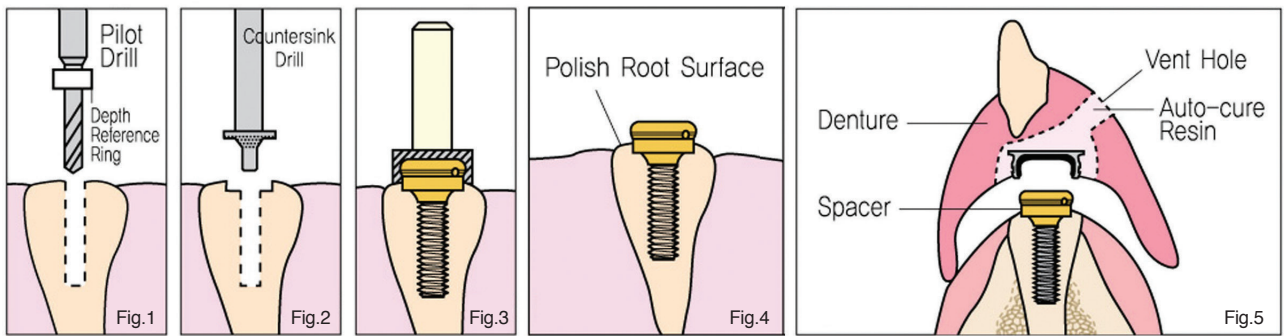
There are two types for root retained overdenture.

The Post type is used in direct technique and there are straight, 10 degree, 20 degree angled females. The female part is made of Titanium alloy (Ti6AL4V) and is coated with a Titanium Nitride coating. And the Cast type has a pattern that is incorporated into wax-pattern for post coping.

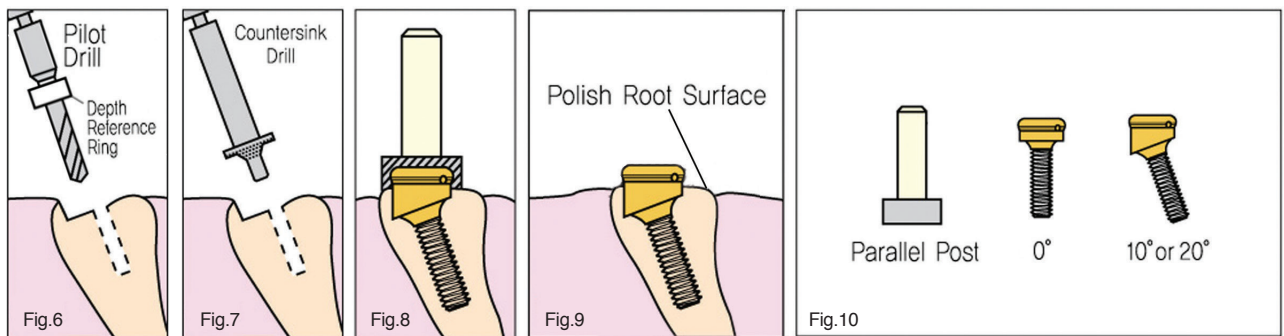
The Root Kit includes 4 attachments (Male&Female), 3 kinds of burs (initial drill, main pilot drill, countersink diamond bur). The Diamond bur is used for the shoulder on the top of the root accept the KERATOR Female.



A. Direct Technique



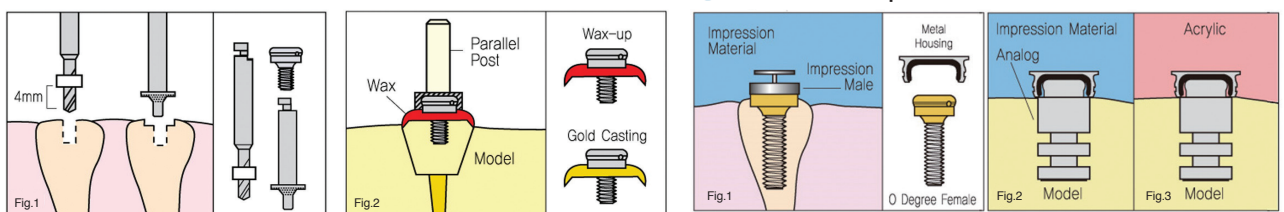
NON-DIVERGENT ROOT



DIVERGENT ROOT

B. Cast-to Technique

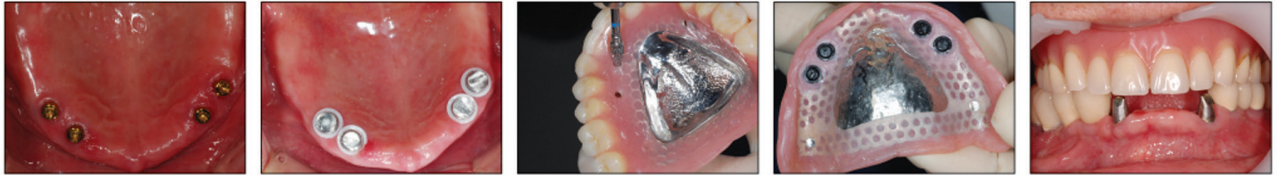
Transfer Impression



CLINICAL PICTURES



Case A (Mandible)



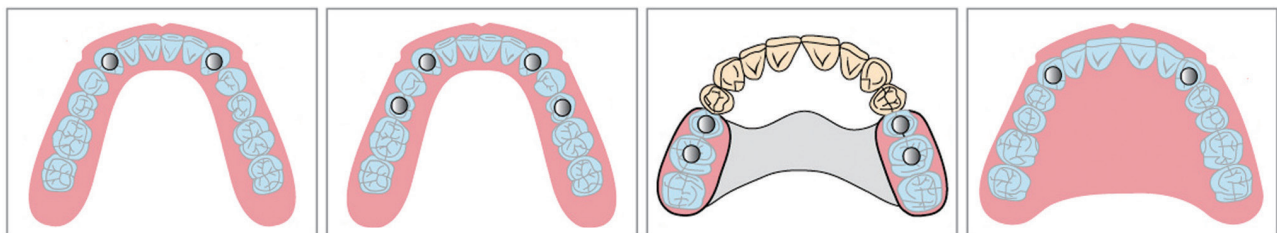
Case B (Maxillary)



Case C (Root Post Type)

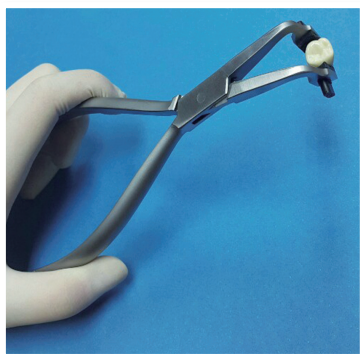


Case D (Root Cast Type)



Implant Mandible Overdenture A Implant Mandible Overdenture B Implant Partial Denture Implant Maxilla Overdenture

KERATOR Crown Plier



KERATOR Crown Pliers are specifically designed for easy removal of temporary crowns, cast crowns or cast metal cores. Difficult removals makes them a must in every dental office.

- ✓ The silicone grips are autoclavable.
- ✓ Better grip for temporary crowns.
- ✓ You can use this Crown Pliers permanently.



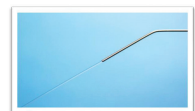
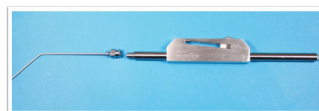
Autoclavable & Replaceable silicone grips.

KERATOR Irrigation Delivery System

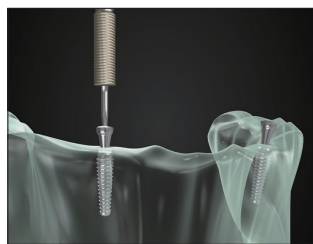
is composed of Omnia Pressure cuff with durability and excellent KERATOR Syringe. All the parts of KERATOR Irrigation System except the Pressure cuff are autoclavable.



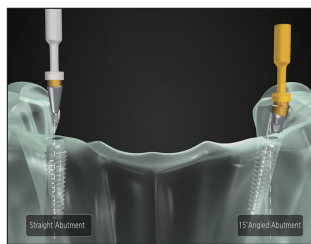
- ✓ The Thumbwheel adjusts the water-pressure.
- ✓ Excellent quality & Reasonable price.
- ✓ Reasonable Price for Extra-Tip for Replacement.
- ✓ Both of 500ml & 1000ml Saline.



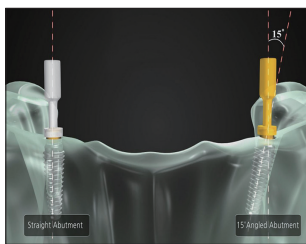
FABRICATION INSTRUCTIONS



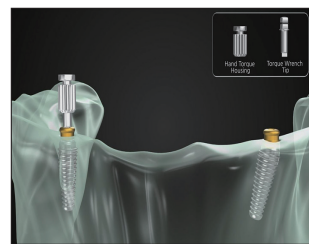
1. Remove healing abutment using hex driver. (0.05inch, 1.27mm)



2. Engage abutment into the implant using carrier.



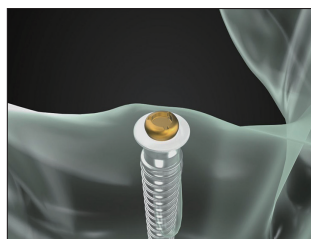
3. Engage straight abutment. (*check the implant alignment)



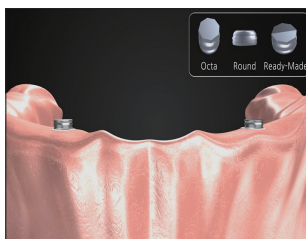
4. Tighten the abutment by Hand torque housing & tip



5. Use the Torque Wrench 30Ncm



6. Place a White Block-out Spacer over the head of each KERATOR abutment.



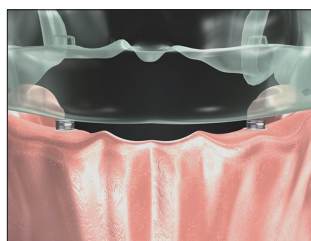
7. Insert Metal Housing with black cap.



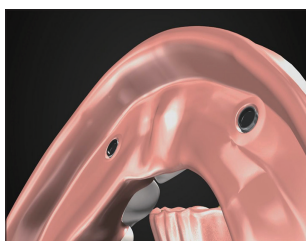
8. Prepare a recess in the denture. Make a vent hole on the lingual aspect to express resin.



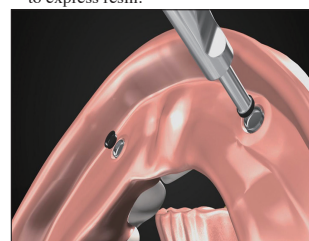
9. Mix a resin and place a small amount in the recess of the denture.



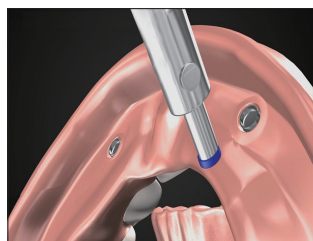
10. Insert the denture into position.



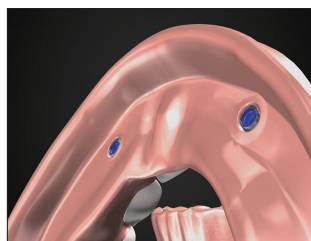
11. After the resin has cured, remove the denture and discard the white spacer.



12. Remove the Black cap from the Metal Housing using KERATOR Magic Tool.



13. Push a final cap using KERATOR Magic Tool.



14. Finished figure.



15. Have the patient insert.



KERATOR QUICK TOUCH

SIMPLE DESIGN / SIMPLE SOLUTION
BALL ATTACHMENT SYSTEM



- **QT METAL HOUSING**
- Metal housing is picked up easily in the denture at chairside.



- **QT COLORED RETENTION CAPS**
- The retention can be adjusted to be low, medium, high according to the patient's needs.
- The Yellow cap (:low) is used for laboratory procedure and semipermanent use.



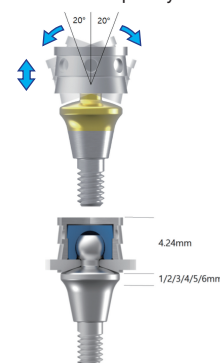
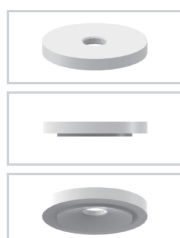
- **QT FITTING & SPACER BLOCK**
- Fitting & Spacer Block obtains the exact location of metal housing in the denture.



- **QT ABUTMENT**
- Abutment has a 2.54mm diameter ball.
- Abutments are available in 1,2,3,4,5 and 6mm cuff heights .
- Plastic carrier is provided together.

• **PIVOT MOVEMENT**

- The metal housing and cap pivot on its ball abutment without any resulting loss of retention.
- The self-aligning abutment has a ball with a 2.54 mm diameter and is suitable for the divergent implant (or root). It can be compensated up to 40 degree.
- QT is the final product to strengthen the strength of existing O-ring system and make up for its weakness completely.



Overdenture Attachment Systems